



 the
malvern
collection



Price List

**Sheds, Workshops,
Potting Sheds &
Greenhouses**
2024



**HANDMADE IN WORCESTERSHIRE
FOR OVER 50 YEARS**

contents

3	Welcome to the Malvern Collection
6-7	Bewdley Apex and Bewdley Pent
8-9	Bewdley Corner and Malvern Heavy Duty Corner
10-13	Malvern Heavy Duty Apex
14-17	Malvern Heavy Duty Reverse Apex
18-21	Malvern Heavy Duty Combination
22-25	Malvern Heavy Duty Pent
26	Potting Shed
27	Victorian Greenhouse
28	Glossary of Terms
29	Important Points to Note
31	Paint Options

welcome to

the malvern collection

HANDMADE IN WORCESTERSHIRE FOR OVER 50 YEARS

In the early 1970s, we started to design and produce garden buildings at our factory in Worcestershire. All of our buildings are made to order and handcrafted using traditional carpentry techniques by skilled craftsmen, which are then delivered and installed by our own teams of experienced fitters across the country.

The Malvern Collection design and make a wide collection of buildings, from the humble shed right through to fully lined, insulated and double glazed garden rooms and offices designed for all year round use.

We offer a wide selection of optional extras which enable you to create your ideal garden room to meet not only your practical needs but also your own personal taste.

Our paint spraying shop is one of the most advanced spraying and drying facilities in the garden building industry, where buildings can be coated with a highly durable and weather resistant, low maintenance paint and primer system, which will protect and enhance your building.

At Malvern, we use only the highest quality materials from sustainable sources. Our redwood buildings are constructed using kiln dried slow grown pine from Sweden's Northern sawmills and our cedar buildings are constructed using Canadian Western Red kiln dried cedar.

We strongly recommend that you visit one of our display sites where you can examine for yourself the quality, design and materials used in the manufacture of our buildings. Experienced staff will be on hand to discuss your individual requirements.

S H E D S

Bewdley



8' x 8' Bewdley Apex with double doors



8' x 6' Bewdley Pent



8' x 6' Bewdley Apex



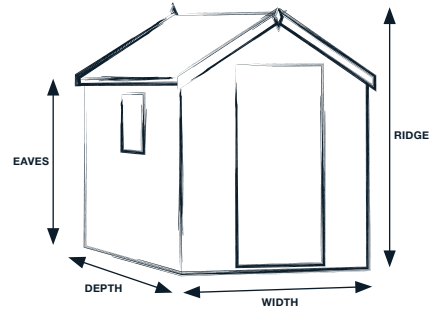
8' x 6' Bewdley Apex



8' x 6' Bewdley Pent

Standard Features

- 13mm redwood cladding
- Heavy duty framework throughout
- All ridge heights under 2.5m
- Single door
- Black ironmongery
- Opening window(s) (quantity dependant on size and model)
- Framed ledged and braced door
- Lockable rimlock and handle door catch
- 3 door hinges per door for extra strength
- Turn button top and bottom of door
- Tongue and groove timber roof and floor
- Polyester mineral felt - available in green, black or red
- Toughened glass
- High quality timber treatment applied throughout prior to delivery
- A wide range of sizes to choose from



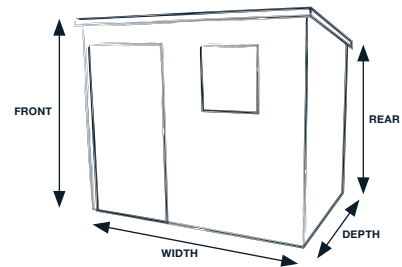
BEWDLEY APEX		
Width	Ridge Height	Eaves Height
1.22m (4')	2.05m	1.73m
1.52m (5')	2.12m	1.73m
1.83m (6')	2.19m	1.73m
2.44m (8')	2.31m	1.73m
Single Door	1.22m wide (4')	0.66m wide
	Other widths	0.89m wide
Optional Double Doors		1.50m wide

Options

- Double doors on 8' wide models
- Additional fixed and opening windows
- Workbenches and shelves
- A set of pressure treated floor bearers

Standard Features

- 13mm redwood cladding
- Heavy duty framework throughout
- All ridge heights under 2.5m
- Single door
- Black ironmongery
- Opening window(s) (quantity dependant on size and model)
- Framed ledged and braced door
- Lockable rimlock and handle door catch
- 3 door hinges per door for extra strength
- Turn button top and bottom of door
- Tongue and groove timber roof and floor
- Polyester mineral felt - available in green, black or red
- Toughened glass
- High quality timber treatment applied throughout prior to delivery
- A wide range of sizes to choose from



BEWDLEY PENT		
Width	Front Height	Rear Height
1.22m (4')	2.12m	1.86m
1.52m (5')	2.12m	1.86m
1.83m (6')	2.12m	1.86m
2.44m (8')	2.12m	1.86m
Single Door	1.83m wide (6')	0.66m wide
	Other widths	0.89m wide

Options

- Additional fixed and opening windows
- Pent sheds have four possible door positions: Left of front, right of front, left hand end and right hand end
- Workbenches and shelves
- A set of pressure treated floor bearers

Bewdley Apex

Size d x w (m)	Size d x w (ft)	Redwood	Floor Bearers	Installation	No. of Windows
1.22 x 1.22	4' x 4'	665	80	105	1
1.83 x 1.22	6' x 4'	830	85	120	1
2.44 x 1.22	8' x 4'	965	105	135	1
2.13 x 1.52	7' x 5'	975	105	135	1
1.83 x 1.83	6' x 6'	995	115	135	1
2.44 x 1.83	8' x 6'	1,110	120	165	1
3.05 x 1.83	10' x 6'	1,395	130	200	2
2.44 x 2.44	8' x 8'	1,455	140	205	1
3.05 x 2.44	10' x 8'	1,795	150	245	2
3.66 x 2.44	12' x 8'	1,995	170	290	2

Additional Features			
Extra fixed window	45	0.23m (9") Wide Shelf	65 per running metre
Extra opening window	85	0.38m (15") Wide Shelf	80 per running metre
Double door upgrade on 2.44m (8') wide Apex model	140	0.38m (15") Wide Workbench	80 per running metre
		0.61m (24") Wide Workbench	100 per running metre

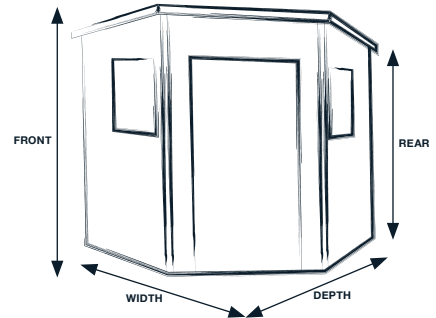
Bewdley Pent

Size w x d (m)	Size w x d (ft)	Redwood	Floor Bearers	Installation	No. of Windows	
					Door in front	Door in end
1.22 x 1.22	4' x 4'	715	80	105	-	1
1.83 x 1.22	6' x 4'	895	85	120	1	1
2.44 x 1.22	8' x 4'	1,035	105	135	1	1
2.13 x 1.52	7' x 5'	1,045	105	135	1	1
1.83 x 1.83	6' x 6'	1,055	115	135	1	1
2.44 x 1.83	8' x 6'	1,165	120	165	1	1
3.05 x 1.83	10' x 6'	1,490	130	200	1	2
2.44 x 2.44	8' x 8'	1,535	140	205	1	1
3.05 x 2.44	10' x 8'	1,900	150	245	1	2
3.66 x 2.44	12' x 8'	2,160	170	290	1	2

Additional Features			
Extra fixed window	45	0.23m (9") Wide Shelf	65 per running metre
Extra opening window	85	0.38m (15") Wide Shelf	80 per running metre
		0.38m (15") Wide Workbench	80 per running metre
		0.61m (24") Wide Workbench	100 per running metre

Standard Features

- 13mm redwood cladding
- Heavy duty framework throughout
- All ridge heights under 2.5m
- Single door
- Black ironmongery
- Opening window either side of door
- Framed ledged and braced door
- Lockable rimlock and handle door catch
- 3 door hinges per door for extra strength
- Turn button top and bottom of door
- Tongue and groove timber roof and floor
- Polyester mineral felt - available in green, black or red
- Toughened glass
- High quality timber treatment applied throughout prior to delivery
- A wide range of sizes to choose from



BEWDLEY CORNER		
	Front Height	Rear Height
All sizes	2.29m	1.86m
Single Door		0.89m wide

Options

- Additional fixed and opening windows
- Workbenches and shelves
- A set of pressure treated floor bearers



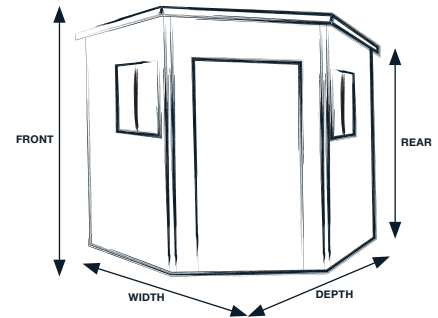
Bewdley Corner

Size w x d (m)	Size w x d (ft)	Redwood	Floor Bearers	Installation
2.13 x 2.13	7' x 7'	1,565	135	165
2.44 x 2.44	8' x 8'	1,825	140	205

Additional Features	
Extra fixed window	45
Extra opening window	85
0.23m (9") Wide Shelf	65 per running metre
0.38m (15") Wide Shelf	80 per running metre
0.38m (15") Wide Workbench	80 per running metre
0.61m (24") Wide Workbench	100 per running metre

Standard Features

- Heavy Duty Framework throughout
- All ridge heights under 2.5m
- 0.15m (6") roof overhang to front and two sides
- Heavy duty floor
- Black or chrome ironmongery - please specify at time of order
- Fully framed ledged and braced single door
- 3 lever mortice lock
- 3 heavy duty hinges to the door
- Single glazed 4mm toughened glass
- Tongue and groove timber roof and floor
- Polyester mineral felt – available in green, black or red
- High quality timber treatment applied throughout prior to delivery
- A wide range of sizes to choose from



MALVERN HEAVY DUTY CORNER		
	Front Height	Rear Height
All sizes	2.29m	1.86m
Single Door	0.89m wide	

Options

- A choice of Heavy Duty Redwood, Heavy Duty Pressure Treated, Heavy Duty Redwood Barnstyle, Heavy Duty Pressure Treated Barnstyle or Western Red Cedar
- Coloured painted finish – a wide selection of colours
- EPDM rubber roof
- Tongue and groove timber lining and insulation
- Georgian style windows
- High level security fixed windows in lieu of opening at no additional cost
- Double glazing (except Georgian)
- Hook and band hinges
- Security pack including 6 pin lock and security screws
- Workbenches and shelves
- A set of pressure treated floor bearers



Malvern Heavy Duty Corner

Size d x w (m)	Size d x w (ft)	Heavy Duty Redwood	Heavy Duty Pressure Treated	Heavy Duty Redwood Barnstyle	Heavy Duty Pressure Treated Barnstyle	Cedar	Coloured Painted Finish	Tongue & Grooved Lining & Insulation	Double Glazing	EPDM Rubber Roof	Floor Bearers	Installation
2.13 x 2.13	7' x 7'	2,755	3,030	2,755	3,030	6,095	1,585	1,670	220	365	130	185
2.44 x 2.44	8' x 8'	3,280	3,610	3,280	3,610	6,995	1,825	1,960	220	475	135	280
2.74 x 2.74	9' x 9'	3,850	4,235	3,850	4,235	7,880	2,050	2,270	220	600	165	370
3.05 x 3.05	10' x 10'	4,375	4,815	4,375	4,815	8,770	2,325	2,610	220	740	195	460

Additional Features	Fixed/Security		Opening	
	Single Glazed	Double Glazed	Single Glazed	Double Glazed
Standard Redwood	115	230	160	275
Standard Pressure Treated	120	240	165	285
Standard Cedar	175	295	220	340
Georgian Redwood	230	-	270	-
Georgian Pressure Treated	235	-	275	-
Georgian Cedar	325	-	365	-

Additional Window in Door	Single Glazed	Double Glazed
Standard Redwood	115	230
Standard Pressure Treated	120	240
Standard Cedar	175	295
Georgian Redwood	230	-
Georgian Pressure Treated	235	-
Georgian Cedar	325	-

Malvern Heavy Duty Corner	2.13m (7')	2.44m (8')	2.74m (9')	3.05m (10')
Georgian Upgrade Single Glazed Windows	295	295	295	295

Stable Door Conversion in lieu of standard	155
--	-----

Hook & Band Hinges	55 per door
Security Pack for Doors	200

0.23m (9") Wide Shelf	65 per running metre
0.38m (15") Wide Shelf	80 per running metre
0.38m (15") Wide Workbench	80 per running metre
0.61m (24") Wide Workbench	100 per running metre

Malvern Heavy Duty Apex Window Configurations

These layouts can be altered to suit your own individual requirements.



1.83m (6')



2.13m (7')



2.44m (8')



3.05m (10')



3.66m (12')



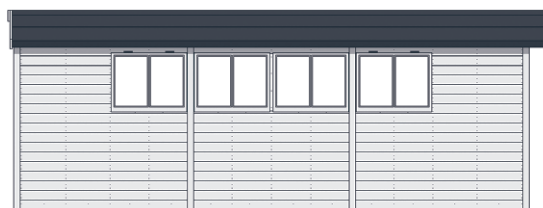
4.27m (14')



4.88m (16')



5.49m (18')



6.10m (20')



8' x 10' Malvern Heavy Duty Apex



12' x 8' Malvern Heavy Duty Apex



12' x 10' Malvern Heavy Duty Apex with Logstore



12' x 10' Malvern Heavy Duty Apex



8' x 6' Malvern Heavy Duty Apex

Standard Features

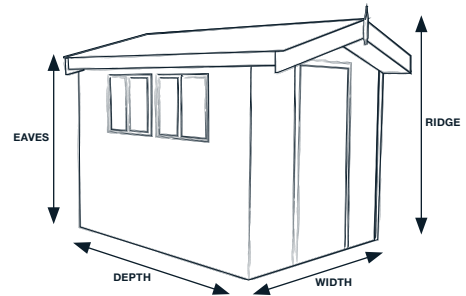
- All ridge heights under 2.5m
- Heavy duty framework throughout
- Additional diagonal framework for extra rigidity and strength
- Heavy duty floor
- Pressure treated floor joists
- Tongue and groove timber roof and floor
- Polyester mineral felt – available in green, black or red
- Fully framed, ledged and braced single door
- 3 lever mortice lock
- 3 heavy duty hinges per door
- Single glazed 4mm toughened glass
- Black or chrome ironmongery - please specify at time of order
- 0.23m (9”) roof overhang above doors
- Joinery made fixed and lockable opening windows
- High quality timber treatment applied throughout prior to delivery (excluding pressure treated)
- A wide range of sizes to choose from

Size d x w (m)	Size d x w (ft)	Heavy Duty Redwood	Heavy Duty Pressure Treated	Heavy Duty Redwood Barnstyle
1.83 x 1.22	6' x 4'	1,520	1,670	1,520
2.13 x 1.52	7' x 5'	1,880	2,070	1,880
1.83 x 1.83	6' x 6'	1,910	2,100	1,910
2.44 x 1.83	8' x 6'	2,295	2,525	2,295
3.05 x 1.83	10' x 6'	2,770	3,045	2,770
3.66 x 1.83	12' x 6'	3,060	3,365	3,060
2.44 x 2.44	8' x 8'	2,930	3,225	2,930
3.05 x 2.44	10' x 8'	3,280	3,610	3,280
3.66 x 2.44	12' x 8'	3,630	3,995	3,630
4.27 x 2.44	14' x 8'	4,070	4,475	4,070
4.88 x 2.44	16' x 8'	4,430	4,875	4,430
3.05 x 3.05	10' x 10'	3,920	4,310	3,920
3.66 x 3.05	12' x 10'	4,375	4,815	4,375
4.27 x 3.05	14' x 10'	4,925	5,420	4,925
4.88 x 3.05	16' x 10'	5,360	5,895	5,360
5.49 x 3.05	18' x 10'	5,815	6,395	5,815
3.66 x 3.66	12' x 12'	4,840	5,325	4,840
4.27 x 3.66	14' x 12'	5,445	5,990	5,445
4.88 x 3.66	16' x 12'	5,915	6,505	5,915
5.49 x 3.66	18' x 12'	6,415	7,055	6,415
6.10 x 3.66	20' x 12'	6,990	7,690	6,990

FOR HIGH PITCH VERSION - ADD 10% TO BUILDING AND ANY ADDITIONAL ROOF OPTION

Options

- A choice of Heavy Duty Redwood, Heavy Duty Pressure Treated, Heavy Duty Redwood Barnstyle, Heavy Duty Pressure Treated Barnstyle or Western Red Cedar cladding
- Higher pitch roof
- Coloured painted finish – wide selection of colours
- Bitumen mineral roof felt tiles, available in green, red or black
- Onduline roof
- Pressure treated slatted roof
- Slate effect roof tiles - a choice of 3 colours available
- Cedar slatted roof
- Pressure treated cedar shingle roof
- Double glazing (excluding Georgian)
- Tongue and groove timber lining plus insulation
- Internal partition walls
- High level security fixed windows in lieu of opening at no additional cost
- Georgian style windows
- Additional 0.91m (3') Logstore to side
- Integral open sided area
- Composite decking upgrade to open area
- Hook and band hinges
- Security pack including 6 pin lock and security screws
- Guttering and downpipe in a choice of three colours
- Heavy duty workbenches and shelves
- Double door upgrade
- No roof overhang over doors
- A set of pressure treated floor bearers



MALVERN HEAVY DUTY APEX			
Width	External		
	Ridge		Eaves
	Low	High	
1.83m (6')	2.33m	2.51m	2.04m
2.44m (8')	2.41m	2.65m	
3.05m (10')	2.43m	2.79m	
3.66m (12')	2.49m	2.94m	
Width	Internal (unlined)		
	Ridge		Eaves
	Low	High	
1.83m (6')	2.20m	2.43m	2.02m
2.44m (8')	2.29m	2.57m	
3.05m (10')	2.29m	2.71m	
3.66m (12')	2.35m	2.85m	

Heavy Duty Pressure Treated Barnstyle	Cedar	Coloured Painted Finish	Tongue & Grooved Lining & Insulation	Double Glazing	Bitumen Felt Roof Tiles	Onduline Roof	Pressure Treated Slatted Roof	Cedar Slatted Roof	Cedar Shingle Roof	Slate Effect Tiled Roof	Floor Bearers	Installation
1,670	3,815	1,170	1,120	110	310	320	340	650	850	850	85	120
2,070	4,540	1,365	1,365	110	455	460	500	935	1,230	1,230	105	135
2,100	4,870	1,385	1,385	110	455	460	525	965	1,315	1,315	115	160
2,525	5,185	1,575	1,630	220	595	605	675	1,290	1,730	1,730	120	180
3,045	6,030	1,780	1,910	220	740	760	820	1,625	2,155	2,155	130	220
3,365	6,645	1,970	2,205	330	900	925	980	1,955	2,570	2,570	135	240
3,225	6,325	1,825	1,960	220	765	785	810	1,570	2,055	2,055	140	280
3,610	6,995	2,025	2,270	220	940	965	980	1,985	2,565	2,565	150	300
3,995	7,680	2,230	2,540	330	1,115	1,140	1,140	2,340	3,075	3,075	170	325
4,475	8,430	2,420	2,845	435	1,280	1,310	1,330	2,720	3,570	3,570	200	365
4,875	9,085	2,605	3,145	435	1,435	1,470	1,560	3,090	4,075	4,075	220	410
4,310	7,995	2,325	2,610	220	1,110	1,135	1,140	2,295	2,995	2,995	200	460
4,815	8,770	2,480	2,915	330	1,315	1,340	1,365	2,785	3,535	3,535	220	530
5,420	9,645	2,685	3,385	435	1,520	1,555	1,560	3,055	4,120	4,120	245	600
5,895	10,425	2,890	3,540	435	1,740	1,780	1,795	3,535	4,695	4,695	270	670
6,395	11,130	3,190	3,805	435	1,960	2,000	2,015	3,980	5,270	5,270	290	740
5,325	9,650	2,725	3,385	330	1,500	1,535	1,560	3,055	4,250	4,250	255	570
5,990	10,595	2,945	3,585	435	1,790	1,825	1,825	3,565	4,670	4,670	280	640
6,505	11,415	3,190	3,960	435	2,035	2,075	2,100	4,025	5,335	5,335	320	715
7,055	12,160	3,430	4,295	435	2,255	2,300	2,420	4,500	6,000	6,000	340	785
7,690	13,065	3,535	4,610	435	2,500	2,555	2,685	5,020	6,660	6,660	365	850

Additional Features	Fixed/Security		Opening	
	Single Glazed	Double Glazed	Single Glazed	Double Glazed
Standard Redwood	115	230	160	275
Standard Pressure Treated	120	240	165	285
Standard Cedar	175	295	220	340
Georgian Redwood	230	-	270	-
Georgian Pressure Treated	235	-	275	-
Georgian Cedar	325	-	365	-

Other Options	1.22m (6')	2.44m (8')	3.05m (10')	3.66m (12')
Redwood Partition	280	395	585	740
Pressure Treated Partition	330	455	675	845
Cedar Partition	655	905	1255	1580

0.23m (9") Wide Shelf	65 per running metre
0.38m (15") Wide Shelf	80 per running metre
0.38m (15") Wide Workbench	80 per running metre
0.61m (24") Wide Workbench	100 per running metre
Guttering per side	65 per running metre
Composite Decking Upgrade	270 per square metre

Single Malvern Door or Double Door in lieu of single	
Redwood	350
Pressure Treated/Barnstyle	405
Cedar	525

Additional Window in Door	Single Glazed	Double Glazed
Standard Redwood	115	230
Standard Pressure Treated	120	240
Standard Cedar	175	295
Georgian Redwood	230	-
Georgian Pressure Treated	235	-
Georgian Cedar	325	-

Stable Door Conversion in lieu of standard	155
--	-----

Hook & Band Hinges	55 per door
Security Pack for Doors	200

Malvern Apex Depth	1.22m (4')	1.83m (6')	2.44m (8')	3.05m (10')	3.66m (12')	4.27m (14')	4.88m (16')	5.49m (18')	6.10m (20')
Georgian Upgrade Single Glazed Windows	150	150	295	295	440	585	585	585	585
Additional 0.91m (3') Logstore	355	460	585	710	825	930	1,065	1,200	1,330

Malvern Heavy Duty Reverse Apex Window and Door Configurations

These layouts can be altered to suit your own individual requirements.



1.83m (6')



2.13m (7')



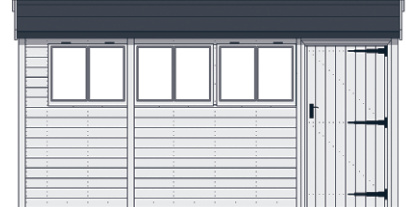
2.44m (8')



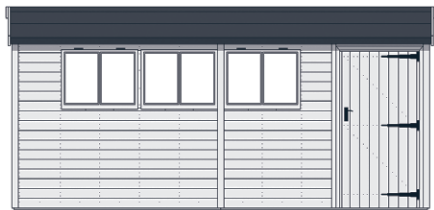
3.05m (10')



3.66m (12')



4.27m (14')



4.88m (16')



5.49m (18')



6.10m (20')



12' x 10' Malvern Heavy Duty Reverse Apex



14' x 10' Malvern Heavy Duty Reverse Apex



20' x 10' Malvern Heavy Duty Reverse Apex



14' x 8' Malvern Heavy Duty Reverse Apex with Tidystore

Standard Features

- All ridge heights under 2.5m
- Heavy duty framework throughout
- Additional diagonal framework for extra rigidity and strength
- Heavy duty floor
- Pressure treated floor joists
- Tongue and groove timber roof and floor
- Polyester mineral felt – available in green, black or red
- Fully framed, ledged and braced single door
- 3 lever mortice lock
- 3 heavy duty hinges per door
- Single glazed 4mm toughened glass
- Black or chrome ironmongery - please specify at time of order
- Joinery made fixed and lockable opening windows
- High quality timber treatment applied throughout prior to delivery (excluding pressure treated)
- A wide range of sizes to choose from

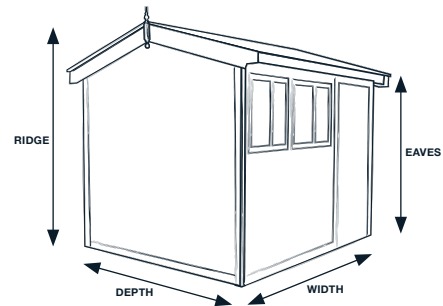
Size w x d (m)	Size w x d (ft)	Heavy Duty Redwood	Heavy Duty Pressure Treated	Heavy Duty Redwood Barnstyle
2.44 x 1.83	8' x 6'	2,180	2,400	2,180
3.05 x 1.83	10' x 6'	2,770	3,045	2,770
3.66 x 1.83	12' x 6'	2,945	3,240	2,945
4.27 x 1.83	14' x 6'	3,465	3,810	3,465
4.88 x 1.83	16' x 6'	3,860	4,245	3,860
3.05 x 2.44	10' x 8'	3,280	3,610	3,280
3.66 x 2.44	12' x 8'	3,515	3,865	3,515
4.27 x 2.44	14' x 8'	3,955	4,350	3,955
4.88 x 2.44	16' x 8'	4,315	4,745	4,315
5.49 x 2.44	18' x 8'	4,695	5,165	4,695
6.10 x 2.44	20' x 8'	5,055	5,560	5,055
3.05 x 3.05	10' x 10'	3,920	4,310	3,920
3.66 x 3.05	12' x 10'	4,260	4,685	4,260
4.27 x 3.05	14' x 10'	4,810	5,290	4,810
4.88 x 3.05	16' x 10'	5,245	5,770	5,245
5.49 x 3.05	18' x 10'	5,700	6,270	5,700
6.10 x 3.05	20' x 10'	6,195	6,815	6,195
3.66 x 3.66	12' x 12'	4,725	5,200	4,725
4.27 x 3.66	14' x 12'	5,330	5,865	5,330
4.88 x 3.66	16' x 12'	5,800	6,380	5,800
5.49 x 3.66	18' x 12'	6,300	6,930	6,300
6.10 x 3.66	20' x 12'	6,875	7,565	6,875

FOR HIGH PITCH VERSION - ADD 10% TO BUILDING AND ANY ADDITIONAL ROOF OPTION

Options

A choice of Heavy Duty Redwood, Heavy Duty Pressure Treated, Heavy

- Duty Redwood Barnstyle, Heavy Duty Pressure Treated Barnstyle or Western Red Cedar cladding
- Higher pitch roof
- Coloured painted finish – wide selection of colours
- Bitumen mineral roof felt tiles, available in green, red or black
- Onduline roof
- Pressure treated slatted roof
- Slate effect roof tiles - a choice of 3 colours available
- Cedar slatted roof
- Pressure treated cedar shingle roof
- Double glazing (excluding Georgian)
- Tongue and groove timber lining plus insulation
- Internal partition walls
- High level security fixed windows in lieu of opening at no additional cost
- Georgian style windows
- Integral Tidystore, 0.91m (3') wide unless specified otherwise
- Integral open sided area
- Composite decking upgrade to open area
- Hook and band hinges
- Security pack including 6 pin lock and security screws
- Guttering and downpipe in a choice of three colours
- Heavy duty workbenches and shelves
- Double door upgrade
- A set of pressure treated floor bearers



MALVERN HEAVY DUTY REVERSE APEX

Depth	External		
	Ridge		Eaves
	Low	High	
1.83m (6')	2.33m	2.51m	2.04m
2.44m (8')	2.41m	2.65m	
3.05m (10')	2.43m	2.79m	
3.66m (12')	2.49m	2.94m	

Depth	Internal (unlined)		
	Ridge		Eaves
	Low	High	
1.83m (6')	2.20m	2.43m	2.02m
2.44m (8')	2.29m	2.57m	
3.05m (10')	2.29m	2.71m	
3.66m (12')	2.35m	2.85m	

Heavy Duty Pressure Treated Barnstyle	Cedar	Coloured Painted Finish	Tongue & Grooved Lining & Insulation	Double Glazing	Bitumen Felt Roof Tiles	Onduline Roof	Pressure Treated Slatted Roof	Cedar Slatted Roof	Cedar Shingle Roof	Slate Effect Tiled Roof	Floor Bearers	Installation
2,400	5,010	1,575	1,630	110	595	605	675	1,290	1,730	1,730	120	180
3,045	6,030	1,780	1,910	220	740	760	820	1,625	2,155	2,155	130	220
3,240	6,470	1,970	2,205	220	900	925	980	1,955	2,570	2,570	135	240
3,810	6,995	2,200	2,445	330	1,030	1,055	1,140	2,265	2,985	2,985	140	260
4,245	7,525	2,440	2,700	330	1,200	1,220	1,315	2,570	3,415	3,415	150	285
3,610	6,995	2,025	2,270	220	940	965	980	1,985	2,565	2,565	150	300
3,865	7,495	2,230	2,540	330	1,115	1,140	1,140	2,340	3,075	3,075	170	325
4,350	8,255	2,420	2,845	330	1,280	1,310	1,330	2,720	3,570	3,570	200	365
4,745	8,910	2,605	3,145	330	1,435	1,470	1,560	3,090	4,075	4,075	220	410
5,165	9,585	2,815	3,420	330	1,665	1,700	1,780	3,490	4,570	4,570	245	450
5,560	10,260	3,030	3,700	330	1,835	1,875	1,885	3,885	5,070	5,070	270	500
4,310	7,995	2,325	2,610	220	1,110	1,135	1,140	2,295	2,995	2,995	200	460
4,685	8,595	2,480	2,915	330	1,315	1,340	1,365	2,785	3,535	3,535	220	530
5,290	9,470	2,685	3,385	330	1,520	1,555	1,560	3,055	4,120	4,120	245	600
5,770	10,250	2,890	3,540	330	1,740	1,780	1,795	3,535	4,695	4,695	270	670
6,270	10,955	3,190	3,805	330	1,960	2,000	2,015	3,980	5,270	5,270	290	740
6,815	11,685	3,430	4,035	330	2,160	2,210	2,235	4,405	5,850	5,850	320	810
5,200	9,475	2,725	3,385	330	1,500	1,535	1,560	3,055	4,105	4,105	255	570
5,865	10,420	2,945	3,585	330	1,790	1,825	1,825	3,565	4,670	4,670	280	640
6,380	11,240	3,190	3,960	330	2,035	2,075	2,100	4,025	5,335	5,335	320	715
6,930	11,985	3,430	4,295	330	2,255	2,300	2,420	4,500	6,000	6,000	340	785
7,565	12,890	3,535	4,610	330	2,500	2,555	2,685	5,020	6,660	6,660	365	850

Additional Features	Fixed/Security		Opening	
	Single Glazed	Double Glazed	Single Glazed	Double Glazed
Standard Redwood	115	230	160	275
Standard Pressure Treated	120	240	165	285
Standard Cedar	175	295	220	340
Georgian Redwood	230	-	270	-
Georgian Pressure Treated	235	-	275	-
Georgian Cedar	325	-	365	-

Other Options	1.22m (6')	2.44m (8')	3.05m (10')	3.66m (12')
Redwood Partition	280	395	585	740
Pressure Treated Partition	330	455	675	845
Cedar Partition	655	905	1255	1580

0.23m (9") Wide Shelf	65 per running metre
0.38m (15") Wide Shelf	80 per running metre
0.38m (15") Wide Workbench	80 per running metre
0.61m (24") Wide Workbench	100 per running metre
Guttering per side	65 per running metre
Composite Decking Upgrade	270 per square metre

Single Malvern Door or Double Door in lieu of single	
Redwood	350
Pressure Treated/Barnstyle	405
Cedar	525

Additional Window in Door	Single Glazed	Double Glazed
Standard Redwood	115	230
Standard Pressure Treated	120	240
Standard Cedar	175	295
Georgian Redwood	230	-
Georgian Pressure Treated	235	-
Georgian Cedar	325	-

Stable Door Conversion in lieu of standard	155
--	-----

Hook & Band Hinges	55 per door
Security Pack for Doors	200

Malvern Apex Reverse Width	2.44m (8')	3.05m (10')	3.66m (12')	4.27m (14')	4.88m (16')	5.49m (18')	6.10m (20')
Georgian Upgrade Single Glazed Windows	150	295	295	440	440	440	440

Malvern Apex Reverse Depth - Integral Tidystore	1.83m (6')	2.44m (8')	3.05m (10')	3.66m (12')
Redwood	245	325	405	475
Pressure Treated/Barnstyle	290	380	475	545
Cedar	650	875	1,135	1,330

Malvern Heavy Duty Combination Window and Door Configurations

These layouts can be altered to suit your own individual requirements.



2.44m (8')



3.05m (10')



3.66m (12')



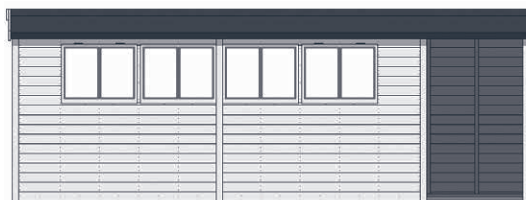
4.27m (14')



4.88m (16')



5.49m (18')



6.10m (20')



12' x 8' Malvern Heavy Duty Combination



10' x 8' Malvern Heavy Duty Combination

Standard Features

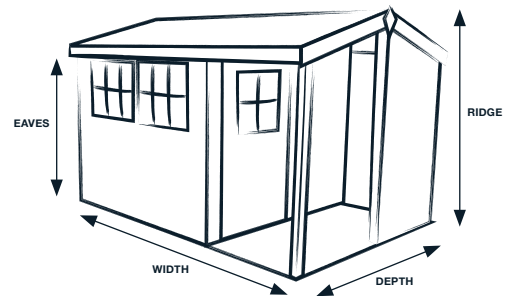
- All ridge heights under 2.5m
- Heavy duty framework throughout
- Additional diagonal framework for extra rigidity and strength
- Heavy duty floor
- Pressure treated floor joists
- Tongue and groove timber roof and floor
- 1.2m (4') integral porch
- Polyester mineral felt – available in green, black or red
- Fully framed, ledged and braced single door
- 3 lever mortice lock
- 3 heavy duty hinges per door
- Single glazed 4mm toughened glass
- Black or chrome ironmongery - please specify at time of order
- Joinery made fixed and lockable opening windows
- High quality timber treatment applied throughout prior to delivery (excluding pressure treated)
- A wide range of sizes to choose from

Options

- A choice of Heavy Duty Redwood, Heavy Duty Pressure Treated, Heavy Duty Redwood Barnstyle, Heavy Duty Pressure Treated Barnstyle or Western Red Cedar cladding
- Higher pitch roof
- Coloured painted finish – wide selection of colours
- Bitumen mineral roof felt tiles, available in green, red or black
- Onduline roof
- Pressure treated slatted roof
- Slate effect roof tiles - a choice of 3 colours available
- Cedar slatted roof
- Pressure treated cedar shingle roof
- Double glazing (excluding Georgian)
- Tongue and groove timber lining plus insulation
- High level security fixed windows in lieu of opening at no additional cost
- Georgian style windows
- Hook and band hinges
- Security pack including 6 pin lock and security screws
- Guttering and downpipe in a choice of three colours
- Heavy duty workbenches and shelves
- Heavy duty staging and high level shelving
- A set of pressure treated floor bearers

Size w x d (m)	Size w x d (ft)	Heavy Duty Redwood	Heavy Duty Pressure Treated	Heavy Duty Redwood Barnstyle
2.44 x 1.83	8' x 6'	2,525	2,780	2,525
3.05 x 1.83	10' x 6'	3,115	3,425	3,115
3.66 x 1.83	12' x 6'	3,290	3,620	3,290
4.27 x 1.83	14' x 6'	3,810	4,190	3,810
4.88 x 1.83	16' x 6'	4,205	4,625	4,205
3.05 x 2.44	10' x 8'	3,705	4,075	3,705
3.66 x 2.44	12' x 8'	3,940	4,335	3,940
4.27 x 2.44	14' x 8'	4,380	4,820	4,380
4.88 x 2.44	16' x 8'	4,740	5,215	4,740
5.49 x 2.44	18' x 8'	5,120	5,630	5,120
6.10 x 2.44	20' x 8'	5,480	6,030	5,480
3.05 x 3.05	10' x 10'	4,425	4,870	4,425
3.66 x 3.05	12' x 10'	4,765	5,240	4,765
4.27 x 3.05	14' x 10'	5,315	5,845	5,315
4.88 x 3.05	16' x 10'	5,750	6,325	5,750
5.49 x 3.05	18' x 10'	6,205	6,825	6,205
6.10 x 3.05	20' x 10'	6,700	7,370	6,700
3.66 x 3.66	12' x 12'	5,300	5,830	5,300
4.27 x 3.66	14' x 12'	5,905	6,495	5,905
4.88 x 3.66	16' x 12'	6,375	7,015	6,375
5.49 x 3.66	18' x 12'	6,875	7,565	6,875
6.10 x 3.66	20' x 12'	7,450	8,195	7,450

FOR HIGH PITCH VERSION - ADD 10% TO BUILDING AND ANY ADDITIONAL ROOF OPTION



MALVERN HEAVY DUTY COMBINATION

Depth	External		
	Ridge		Eaves
	Low	High	
1.83m (6')	2.33m	2.51m	2.04m
2.44m (8')	2.41m	2.65m	
3.05m (10')	2.43m	2.79m	
3.66m (12')	2.49m	2.94m	

Depth	Internal (unlined)		
	Ridge		Eaves
	Low	High	
1.83m (6')	2.20m	2.43m	2.02m
2.44m (8')	2.29m	2.57m	
3.05m (10')	2.29m	2.71m	
3.66m (12')	2.35m	2.85m	

Heavy Duty Pressure Treated Barnstyle	Cedar	Coloured Painted Finish	Tongue & Grooved Lining & Insulation	Double Glazing	Bitumen Felt Roof Tiles	Onduline Roof	Pressure Treated Slatted Roof	Cedar Slatted Roof	Cedar Shingle Roof	Slate Effect Tiled Roof	Floor Bearers	Installation
2,780	5,760	1,575	1,140	110	595	605	675	1,290	1,730	1,730	120	180
3,425	6,780	1,780	1,385	110	740	760	820	1,625	2,155	2,155	130	220
3,620	7,220	1,970	1,630	220	900	925	980	1,955	2,570	2,570	135	240
4,190	7,745	2,200	1,910	220	1,030	1,055	1,140	2,265	2,985	2,985	140	260
4,625	8,275	2,440	2,205	330	1,200	1,220	1,315	2,570	3,415	3,415	150	285
4,075	7,970	2,025	1,690	110	940	965	980	1,985	2,565	2,565	150	300
4,335	8,470	2,230	1,960	220	1,115	1,140	1,140	2,340	3,075	3,075	170	325
4,820	9,230	2,420	2,270	220	1,280	1,310	1,330	2,720	3,570	3,570	200	365
5,215	9,885	2,605	2,540	330	1,435	1,470	1,560	3,090	4,075	4,075	220	410
5,630	10,560	2,815	2,845	440	1,665	1,700	1,780	3,490	4,570	4,570	245	450
6,030	11,235	3,030	3,145	440	1,835	1,875	1,885	3,885	5,070	5,070	270	500
4,870	9,230	2,325	1,995	110	1,110	1,135	1,140	2,295	2,995	2,995	200	460
5,240	9,830	2,480	2,295	220	1,315	1,340	1,365	2,785	3,535	3,535	220	530
5,845	10,705	2,685	2,610	220	1,520	1,555	1,560	3,055	4,120	4,120	245	600
6,325	11,485	2,890	2,915	330	1,740	1,780	1,795	3,535	4,695	4,695	270	670
6,825	12,190	3,190	3,385	440	1,960	2,000	2,015	3,980	5,270	5,270	290	740
7,370	12,920	3,430	3,540	440	2,160	2,210	2,235	4,405	5,850	5,850	320	810
5,830	10,905	2,725	2,685	220	1,500	1,535	1,560	3,055	4,105	4,105	255	570
6,495	11,850	2,945	2,995	220	1,790	1,825	1,825	3,565	4,670	4,670	280	640
7,015	12,670	3,190	3,385	330	2,035	2,075	2,100	4,025	5,335	5,335	320	715
7,565	13,415	3,430	3,585	440	2,255	2,300	2,420	4,500	6,000	6,000	340	785
8,195	14,320	3,535	3,960	440	2,500	2,555	2,685	5,020	6,660	6,660	365	850

Additional Features	Fixed/Security		Opening	
	Single Glazed	Double Glazed	Single Glazed	Double Glazed
Standard Redwood	115	230	160	275
Standard Pressure Treated	120	240	165	285
Standard Cedar	175	295	220	340
Georgian Redwood	230	-	270	-
Georgian Pressure Treated	235	-	275	-
Georgian Cedar	325	-	365	-

Additional Window in Door	Single Glazed	Double Glazed
Standard Redwood	115	230
Standard Pressure Treated	120	240
Standard Cedar	175	295
Georgian Redwood	230	-
Georgian Pressure Treated	235	-
Georgian Cedar	325	-

Stable Door Conversion in lieu of standard	155
--	-----

0.23m (9") Wide Shelf	65 per running metre
0.38m (15") Wide Shelf	80 per running metre
0.38m (15") Wide Workbench	80 per running metre
0.61m (24") Wide Workbench	100 per running metre
0.23m (9") High Level Shelving	70 per running metre
0.68m (27") Staging	105 per running metre
Guttering per side	65 per running metre

Hook & Band Hinges	55 per door
Security Pack for Doors	200

Malvern Heavy Duty Combination Width	2.44m (8')	3.05m (10')	3.66m (12')	4.27m (14')	4.88m (16')	5.49m (18')	6.10m (20')
Georgian Upgrade Single Glazed Windows	150	150	295	295	440	585	585

Malvern Heavy Duty Pent Window and Door Configurations

These layouts can be altered to suit your own individual requirements.



1.83m (6')



2.13m (7')



2.44m (8')



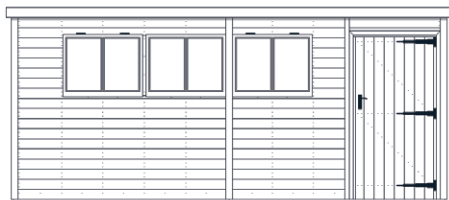
3.05m (10')



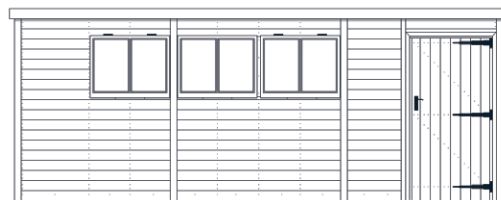
3.66m (12')



4.27m (14')



4.88m (16')



5.49m (18')



6.10m (20')



10' x 6' Malvern Heavy Duty Pent



10' x 6' Malvern Heavy Duty Pent



12' x 8' Malvern Heavy Duty Pent

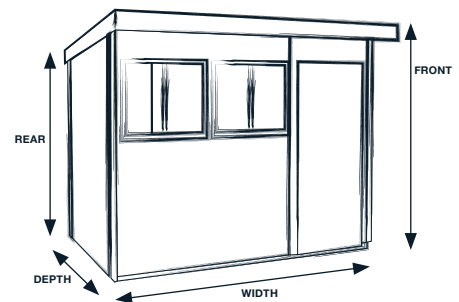
Standard Features

- Front height under 2.5m
- Heavy duty framework throughout
- Additional diagonal framework for extra rigidity and strength
- Heavy duty floor
- Pressure treated floor joists
- Tongue & groove timber roof and floor
- Polyester mineral felt – available in green, black or red
- Fully framed, ledged and braced single door
- 3 lever mortice lock
- 3 heavy duty hinges per door
- Single glazed 4mm toughened glass
- Black or chrome ironmongery - please specify at time of order
- 0.23m (9”) roof overhang to front
- Joinery made fixed and lockable opening windows
- High quality timber treatment applied throughout prior to delivery (excluding pressure treated)
- A wide range of sizes to choose from

Size w x d (m)	Size w x d (ft)	Heavy Duty Redwood	Heavy Duty Pressure Treated
1.83 x 1.22	6' x 4'	1,520	1,670
2.13 x 1.52	7' x 5'	1,880	2,070
2.44 x 1.83	8' x 6'	2,180	2,400
3.05 x 1.83	10' x 6'	2,770	3,045
3.66 x 1.83	12' x 6'	2,945	3,240
4.27 x 1.83	14' x 6'	3,465	3,810
4.88 x 1.83	16' x 6'	3,860	4,245
2.44 x 2.44	8' x 8'	2,815	3,095
3.05 x 2.44	10' x 8'	3,280	3,610
3.66 x 2.44	12' x 8'	3,515	3,865
4.27 x 2.44	14' x 8'	3,955	4,350
4.88 x 2.44	16' x 8'	4,315	4,745
5.49 x 2.44	18' x 8'	4,695	5,165
6.10 x 2.44	20' x 8'	5,055	5,560
3.05 x 3.05	10' x 10'	3,920	4,310
3.66 x 3.05	12' x 10'	4,260	4,685
4.27 x 3.05	14' x 10'	4,810	5,290
4.88 x 3.05	16' x 10'	5,245	5,770
5.49 x 3.05	18' x 10'	5,700	6,270
6.10 x 3.05	20' x 10'	6,195	6,815

Options

- A choice of Heavy Duty Redwood, Heavy Duty Pressure Treated, Heavy Duty Redwood Barnstyle, Heavy Duty Pressure Treated Barnstyle or Western Red Cedar cladding
- Coloured painted finish – wide selection of colours
- EPDM rubber roof
- Tongue and groove lining plus insulation
- Internal partition wall
- High level security fixed windows in lieu of opening at no additional cost
- Georgian style windows
- Double glazing (excluding Georgian)
- Integral Tidystore conversion
- Integral open sided area
- Composite decking upgrade to open area
- Hook and band hinges
- Security pack including 6 pin lock and security screws
- Guttering and downpipe in a choice of three colours
- Heavy duty workbenches and shelves
- Double door upgrade
- A set of pressure treated floor bearers



MALVERN HEAVY DUTY PENT		
Depth	Front Height	Rear Height
1.83m (6')	2.22m	2.02m
2.44m (8')	2.22m	2.02m
3.05m (10')	2.24m	2.04m
Single Door	0.89m wide	

Heavy Duty Redwood Barnstyle	Heavy Duty Pressure Treated Barnstyle	Cedar	Coloured Painted Finish	Tongue & Grooved Lining & Insulation	Double Glazing	EPDM Rubber Roof	Floor Bearers	Installation
1,520	1,670	3,815	1,170	1,120	110	185	85	120
1,880	2,070	4,540	1,365	1,365	110	260	105	135
2,180	2,400	5,010	1,575	1,630	110	360	120	180
2,770	3,045	6,030	1,780	1,910	220	445	130	220
2,945	3,240	6,470	1,970	2,205	220	525	135	240
3,465	3,810	6,995	2,200	2,445	330	620	140	260
3,860	4,245	7,525	2,440	2,700	330	710	150	285
2,815	3,095	6,150	1,825	1,960	110	475	140	280
3,280	3,610	6,995	2,025	2,270	220	595	150	300
3,515	3,865	7,495	2,230	2,540	220	710	170	325
3,955	4,350	8,255	2,420	2,845	330	825	200	365
4,315	4,745	8,910	2,605	3,145	330	950	220	410
4,695	5,165	9,585	2,815	3,420	330	1,060	245	450
5,055	5,560	10,260	3,030	3,700	330	1,180	270	500
3,920	4,310	7,995	2,325	2,610	220	740	200	460
4,260	4,685	8,595	2,480	2,915	220	890	220	530
4,810	5,290	9,470	2,685	3,385	330	1,035	245	600
5,245	5,770	10,250	2,890	3,540	330	1,180	270	670
5,700	6,270	10,955	3,190	3,805	330	1,335	290	740
6,195	6,815	11,685	3,430	4,035	330	1,485	320	810

Additional Features	Fixed/Security		Opening	
	Single Glazed	Double Glazed	Single Glazed	Double Glazed
Standard Redwood	115	230	160	275
Standard Pressure Treated	120	240	165	285
Standard Cedar	175	295	220	340
Georgian Redwood	230	-	270	-
Georgian Pressure Treated	235	-	275	-
Georgian Cedar	325	-	365	-

Other Options	1.22m (6')	2.44m (8')	3.05m (10')
Redwood Partition	280	395	585
Pressure Treated Partition	330	455	675
Cedar Partition	655	905	1255

0.23m (9") Wide Shelf	65 per running metre
0.38m (15") Wide Shelf	80 per running metre
0.38m (15") Wide Workbench	80 per running metre
0.61m (24") Wide Workbench	100 per running metre
Guttering per side	65 per running metre
Composite Decking Upgrade	270 per square metre

Single Malvern Door or Double Door in lieu of single	
Redwood	350
Pressure Treated/Barnstyle	405
Cedar	525

Additional Window in Door	Single Glazed	Double Glazed
Standard Redwood	115	230
Standard Pressure Treated	120	240
Standard Cedar	175	295
Georgian Redwood	230	-
Georgian Pressure Treated	235	-
Georgian Cedar	325	-

Stable Door Conversion in lieu of standard	155
--	-----

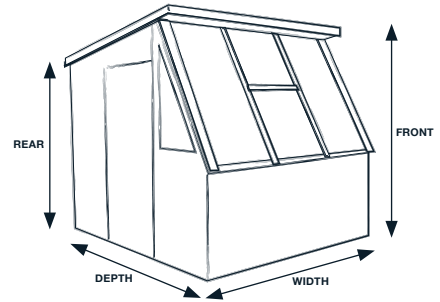
Hook & Band Hinges	55 per door
Security Pack for Doors	200

Malvern Pent Width	1.83m (6')	2.13m (7')	2.44m (8')	3.05m (10')	3.66m (12')	4.27m (14')	4.88m (16')	5.49m (18')	6.10m (20')
Georgian Upgrade Single Glazed Windows	150	150	150	295	295	440	440	440	440

Malvern Pent Depth - Integral Tidystore	1.83m (6')	2.44m (8')	3.05m (10')
Redwood	245	325	405
Pressure Treated	290	380	475
Cedar	650	875	1,135

Standard Features

- Heavy duty framework throughout
- Heavy duty floor
- Tongue and groove timber roof and floor
- Polyester mineral felt - available in green, black or red
- Fully framed, ledged and braced door
- 3 heavy duty hinges per door
- One opening vent window to the front
- Side windows
- 4mm toughened glass
- Black or chrome ironmongery - please specify at time of order
- Front roof overhang
- High quality timber treatment applied throughout prior to delivery (excluding pressure treated)
- Six sizes to choose from



POTTING SHED		
	Front Height	Rear Height
All sizes	2.29m	1.86m
Single Door	0.89m wide	

Options

- A choice of Heavy Duty Redwood, Heavy Duty Pressure Treated or Western Red Cedar cladding
- Coloured painted finish - wide selection of colours
- Stable door
- Heavy duty staging under windows
- Glass to ground glazing
- Guttering and downpipe in a choice of three colours
- A set of pressure treated floor bearers



Potting Shed

Size w x d (m)	Size w x d (ft)	Heavy Duty Redwood	Heavy Duty Pressure Treated	Standard Cedar	Coloured Painted Finish	Glass to Ground Glazing		Floor Bearers	Installation
						Redwood/ Pressure Treated	Cedar		
1.83 x 1.83	6' x 6'	2,660	3,055	3,905	1,385	420	925	120	200
2.44 x 1.83	8' x 6'	2,890	3,345	4,225	1,575	450	975	130	215
2.13 x 2.13	7' x 7'	2,995	3,455	4,390	1,585	435	950	135	215
2.44 x 2.13	8' x 7'	3,245	3,710	4,705	1,685	450	975	135	230
2.44 x 2.44	8' x 8'	3,500	4,010	4,995	1,825	450	975	140	245
3.05 x 2.44	10' x 8'	4,180	4,810	5,880	2,025	570	1,265	150	365

	Redwood	Pressure Treated	Cedar
0.64m (25") Wide Staging per running metre	105	115	195

Additional Features	
Stable Door Conversion in lieu of standard	155

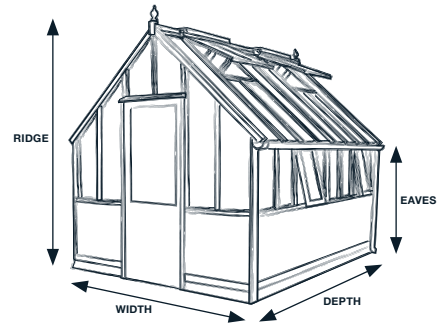
Additional Opening Window in rear or end	
Redwood	160
Pressure Treated	165
Cedar	220

0.23m (9") Wide Shelf	65 per running metre
0.38m (15") Wide Shelf	80 per running metre
0.38m (15") Wide Workbench	80 per running metre
0.61m (24") Wide Workbench	100 per running metre
Guttering	65 per running metre



Standard Features

- Cedar timber throughout
- Boarded base panels all round
- Automatic roof vents
- Lockable single door opening in hinged on right
- Solid brass or chrome ironmongery - please specify at time of order
- Guttering and downpipes to both sides
- Secured to base
- High quality timber treatment applied throughout prior to delivery
- A wide range of sizes to choose from



Options

- Comprehensive paint system to protect and decorate available in a variety of colours
- Coloured painted finish - wide selection of colours
- Staging
- Shelving
- Door can be hinged on the left or made to open outwards



VICTORIAN		
Building	Ridge Height	Eaves Height
1.93m (6' 4")	2.29m	1.98m
2.39m (7' 9")	2.83m	1.58m



Victorian

Size d x w (m)	Size d x w (ft)	Price	Coloured Painted Finish	21" (533mm) Staging	12" (305mm) Shelving	Installation	Roof Vents/ Side Vents
1.60 x 1.93	5'3" x 6'4"	5,235	1,060	335	215	400	2/2
2.39 x 1.93	7'10" x 6'4"	6,025	1,575	500	335	435	2/2
3.12 x 1.93	10'3" x 6'4"	7,350	1,780	640	405	500	4/4
3.89 x 1.93	12'9" x 6'4"	8,520	1,970	790	505	560	4/4
4.65 x 1.93	15'3" x 6'4"	9,210	2,440	950	580	630	6/6

Size d x w (m)	Size d x w (ft)	Price	Coloured Painted Finish	25" (635mm) Staging	12" (305mm) Shelving	Installation	Roof Vents/ Side Vents
1.60 x 2.36	5'3" x 7'9"	6,170	1,575	340	215	435	2/2
2.39 x 2.36	7'10" x 7'9"	7,315	1,825	500	335	500	2/2
3.12 x 2.36	10'3" x 7'9"	8,355	2,085	650	405	570	4/4
3.89 x 2.36	12'9" x 7'9"	10,100	2,230	805	505	655	4/4
4.65 x 2.36	15'3" x 7'9"	11,075	2,605	970	580	750	6/6

Glossary of Terms

Coloured Painted Finish

A comprehensive paint system is applied prior to the building leaving the factory. The paint system comprises of an initial undercoat and a further top coat of your chosen colour.

Higher Pitched Roof

For those that require extra internal height.

Tongue & Groove lining and insulation

Building is internally lined with foil back bubble insulation and covered with redwood tongue and groove matchboard.

Bitumen Felt Tiles

Roof is covered with tile effect heavy duty felt tiles.

Slatted Roof

An aesthetic roof made with featheredged pressure treated redwood or Western Red cedar boards to enhance the appearance of your building and provide added protection to the roofing felt beneath.

Cedar Shingle Roof

Western Red cedar shingles fixed to pressure treated joists to enhance the appearance of your building and provide added protection to the roofing felt beneath.

EPDM Rubber Roof

A maintenance free synthetic rubber membrane covering the roof as an alternative to roofing felt.

Slate Effect Roof Tile

Slate effect roof tile is a synthetic roof tile which emulates the appearance of natural slates and has a long life span with no maintenance.

Guttering

Guttering is available in a choice of three colours.

Integral Open Sided Area

Malvern Sheds (excluding Corner) can be divided into rooms with an open space decking area. Timber decking is used for this open area, with composite decking available as an upgrade.

Composite Decking

A high density, heavy duty and weather resistant wood composite.

Heavy Duty Floor Upgrade

The heavy duty floor is a 19mm Heavy Duty Redwood and fitted as standard throughout excluding the Bewdley sheds and Victorian. .

Black or Chrome ironmongery

Substitute ironmongery for either black or chrome to suit your requirements.

A set of Floor Bearers

Floor Bearers are 45 x 45mm (2" x 2") pressure treated lengths of timber which run in an opposite direction to the floor joists making a crisscross formation, allowing air circulation and ventilation to your garden building, taking away direct contact from the base and helps prevent damp from attacking the timbers.

BEWDLEY DOOR OPENINGS (W X H)	
1.22m (4') wide Apex	0.66m x 1.63m
1.52m (5') wide Apex	0.89m x 1.63m
1.83m (6') wide Pent	0.66m x 1.75m
All other Single Doors	0.89m x 1.75m
Double Doors on 2.44m (8') Apex	1.50m x 1.75m

Victorian Door	
Single Door	0.76m x 1.98m

WALL THICKNESS	
Redwood Standard Cladding	13mm
Cedar Cladding	12mm
Barnstyle Cladding	8-23mm
Redwood & Pressure Treated Heavy Duty Cladding	19mm
Framing	45mm
Tongue and Groove Lining	12mm
Skirting	12mm

MALVERN DOOR OPENINGS (W X H)	
1.22m (4') wide Apex	0.68m x 1.75m
1.52m (5') wide Apex	0.89m x 1.75m
All other Apex Doors	0.89m x 1.85m
Apex Narrow Double Doors	1.37m x 1.85m
Apex Wide Double Doors	1.77m x 1.85m
Reverse Apex, Pent and Potting Shed	0.89m x 1.75m
Reverse Apex and Pent Narrow Double Doors	1.37m x 1.75m
Reverse Apex and Pent Wide Double Doors	1.77m x 1.75m

FLOOR THICKNESS	
Standard Floor	13mm
Heavy Duty Floor	19mm
Pressure Treated Joists	45mm

Important Points

to note

All of our Sheds, Workshops, Potting Sheds and Cedar Greenhouses come with a guarantee against rot and decay. Twelve years for cedar, eight years for pressure treated and redwood.

All other workmanship and materials are guaranteed to be free from defects and faulty installation for a period of 12 months. All of our guarantees are subject to the buildings being maintained in line with our recommendations. Glass is only guaranteed for a period of three days from the date of delivery.

Our recommendations are that all timber garden structures require ongoing maintenance following installation. Cedar, redwood & pressure treated redwood require annual timber treatment to be applied, ideally prior to the colder wetter months for added protection. We recommend all spray painted buildings are maintained on an annual basis, inspect the painted areas on the building, checking for any areas where the paint finish may be starting to deteriorate over time, peeling or flaking and repaint where necessary. A full guide of maintenance guidelines are available on request.

All base work is the responsibility of the customer, as is the safe securing of the building once installed, excluding cedar victorian. We require a level solid base, either paving slabs, decking or concrete upon which to install your building. In the event of a base failure, it is the customers responsibility to accept delivery of the building safely and store appropriately.

Please allow as much room as possible around the building for our fitters to work during installation, a minimum of 450mm. If this is not possible please contact the office to discuss.

Our installers will need clear access to carry building sections from the vehicle to your prepared base, with no height restrictions or tight, sharp corners to negotiate.

Our installers cannot lift sections over 1.22m in height or over buildings such as garages. If the only access is through the house, a straight run is required and many sections will not pass through doorways. Please advise us in advance if there are any difficulties regarding access.

Always make allowance for any roof overhang when buildings have to go into confined spaces.

All redwood and cedar sheds have redwood roofs and floors. Cedar buildings have cedar windows, doors and external cladding only i.e. they have redwood framing, floors, roofs and open areas. All pressure treated sheds are pressure treated throughout.

Bewdley ironmongery is black. Malvern ironmongery is black or chrome as standard and this must be specified on order. Victorian Greenhouse ironmongery is brass or chrome but must be specified at time of ordering.

All building dimensions shown in this brochure are approximate, based on floor sizes.

All timber used in the construction of our buildings originates from sustainable forests.

As it is our policy to continually improve products, methods and materials, we reserve the right to change specifications from time to time, we will not make any significant variations without your agreement.

All images and descriptions are for illustration purposes only and are not always standard specification.

All building sizes are approximate and for guidelines only. All timber measurements, if stated, are finished sizes only i.e. after machining. Please note that finished sizes can vary by plus or minus 1mm.

We strongly advise that you visit one of our showrooms to view the range of buildings and finishes.



“Top Quality”

Purchased a garden shed last Autumn. Beautiful colour green, really blended well into garden. Shed installed efficiently with no problems. Stores all my garden equipment and more with useful potting bench and lots of space for other items. It is a really great addition to my garden

by Guthriemw256 on 11/01/2024



“Burdley Shed”

Really impressed with the quality of my new shed and the service from Malvern and their fitters. Very sturdy building, built to last. Fitters were punctual, friendly and very capable. A pleasure to deal with, great communication throughout. Would recommend to anyone. Value for money.

by SelenaClarke on 14/02/2024



“Excellent Customer Service. Excellent Build Quality”

After research we ordered a ‘Malvern Reverse’ 12’ x 8’ reverse apex heavy duty garden shed in Green/Black paint with 3 Georgian style windows and a 12’ long shelf. From the initial point of contact at the Garden Centre, where the staff were professional and courteous with no sales pressure whatsoever. Having placed an order the following day, I was subsequently contacted by The Malvern Collection Sales team. I must say that all telephone & email contact was helpful and informative on all occasions with all staff being very professional. The building was delivered on the date advised and the two fitters were professional, polite and courteous. They took great care not to damage plants or building structures around the surrounding garden. We are very pleased with the quality and painted finish of the building and would not hesitate to recommend The Malvern Collection companies to friends or anyone thinking of purchasing a Malvern Collection Building.

by Xtrail70 on 10/02/2024



“The Best Of Sheds”

We have been looking for a quality garden shed for a long time and have researched and visited many show sites but have always been slightly disappointed...not anymore! We were lucky enough last year to come across an ex-display garden shed from Malvern that had everything on our tick list. We quickly snapped it up at an excellent price but we were not in a position to view it beforehand so we did have a few concerns whether it would be okay. We needn’t have worried our shed was installed by the excellent team from Malvern at the end on November and to say we are pleased is an understatement. The quality is second to none and we know because we have seen a lot of sheds! From our very first initial enquiry, to help and guidance from Malvern customer service regarding installation of a base, we cannot fault them, the installation team were fantastic, they arrived on time and we’re super efficient. We cannot believe our shed is ex-display, the quality and condition is excellent and we would not hesitate in recommending Malvern.

by Anonymous on 16/01/2024

Paint Options



The swatches are for illustration purposes only as the printing process may not allow an accurate colour representation of paint and stain based finishes. We advise when selecting a final colour choice to request a painted timber sample prior to doing so or to visit your local showroom.

*Please note painted MDF colour options are only available in these colours.

Other ranges available...



Garden Studios



Cottage Rooms & Summerhouses



Garden Rooms & Offices

Quality Garden Rooms & Buildings ***Manufactured and installed by The Malvern Collection Ltd.***

All prices are in (£) Pound Sterling and include VAT and delivery to mainland England, Wales and Scotland* up to the Caledonian Canal.
*Restrictions may apply.

MARCH 2024 V1